

Data Infrastructure for UDTs



Use case example 1: Crowd mobility



P2



P1

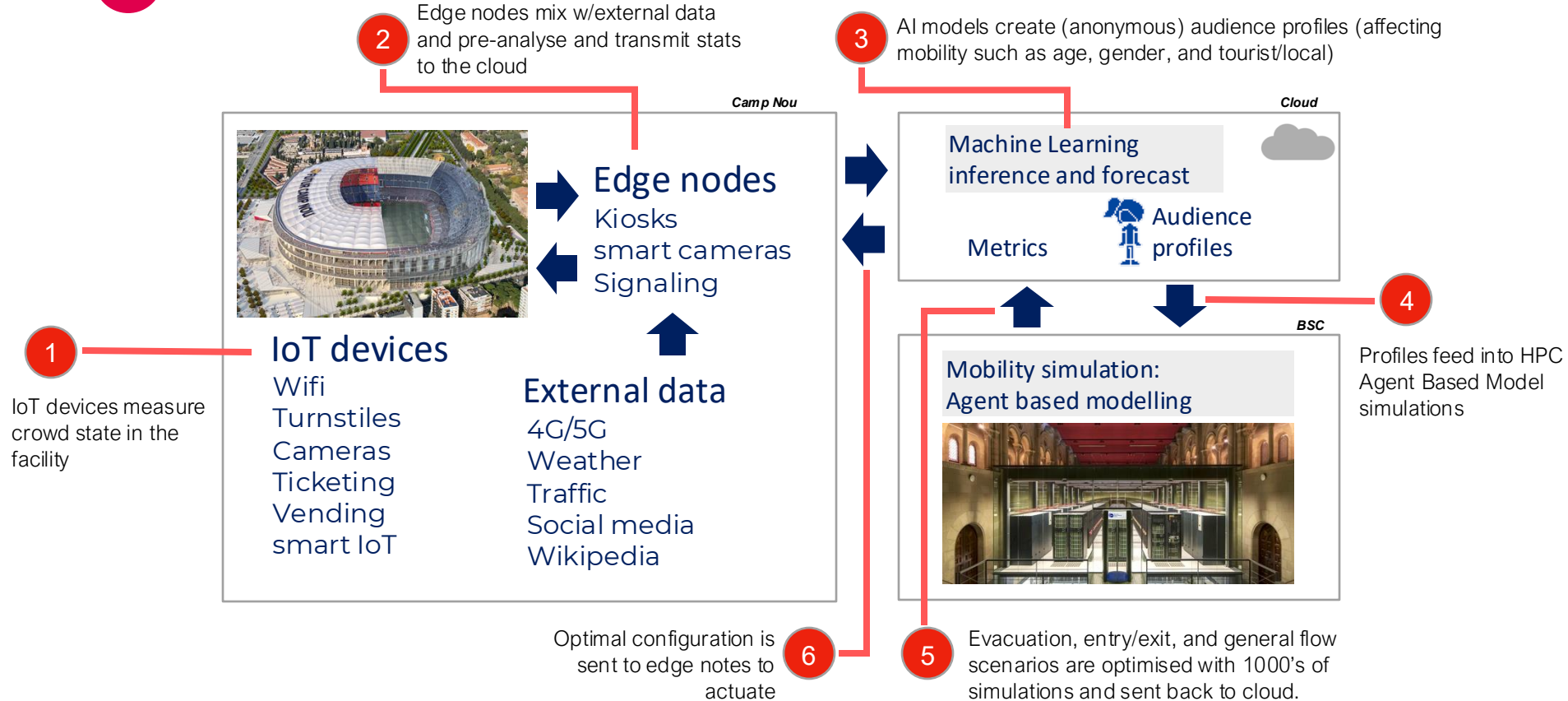


P0.5

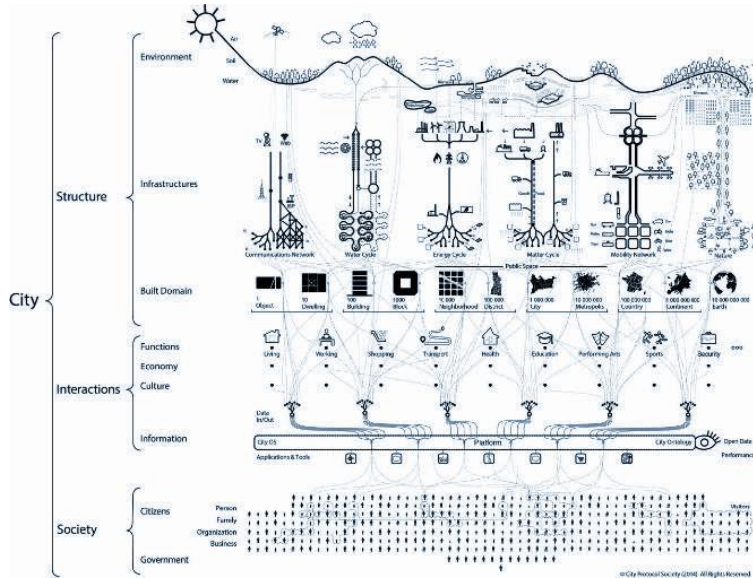


PB

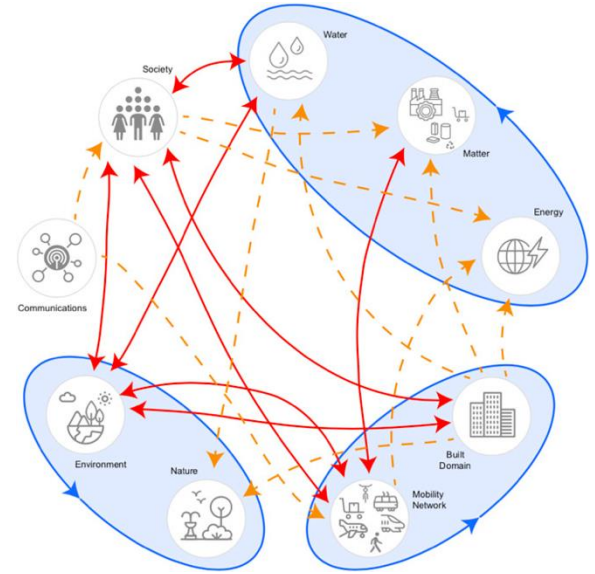
Use Case: The Camp Nou Digital Twin



From anatomy to physiology of the city



Theoretical framework on
how to simulate a
complete city

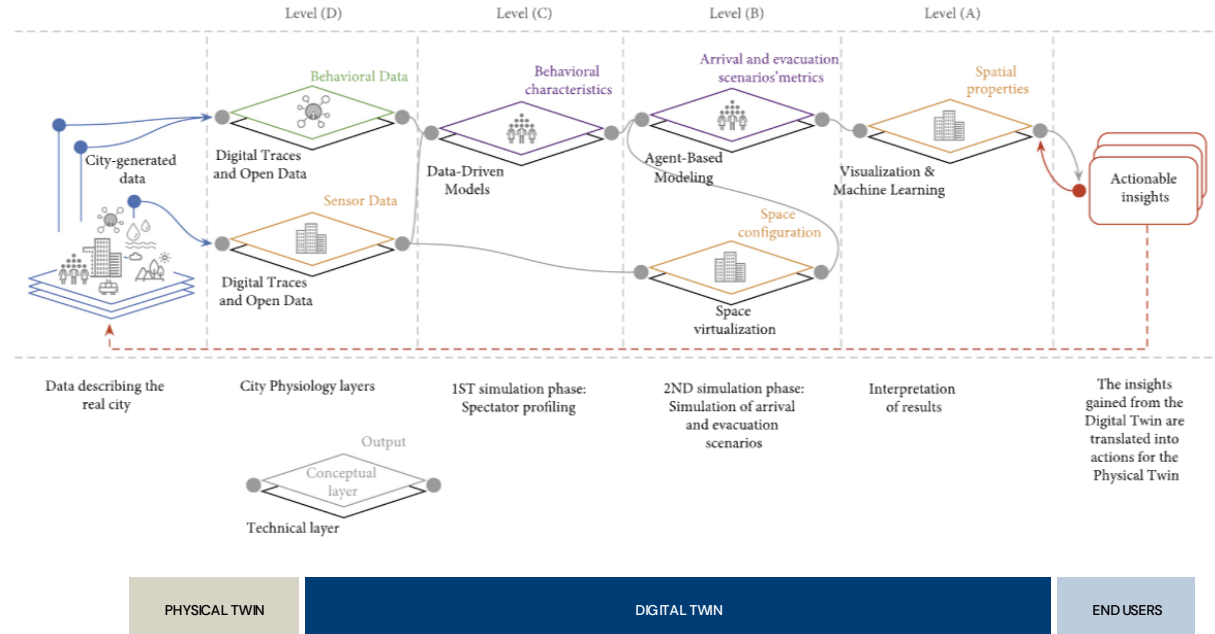


Metà, I., Cucchiatti, F. M., Navarro-Mateu, D., Graells-Garrido, E., & Gualart, V. (2022). A physiology-inspired framework for holistic city simulations. *Cities*, 126, 103553. <https://doi.org/10.1016/j.cities.2021.103553>

City physiology: The Camp Nou pilot

Modularity and adaptability tests of the theoretical framework:

- ABM simulations of crowd mobility of crowds
- Layers and interactions
 - Constructed domain
 - Communication
 - Society

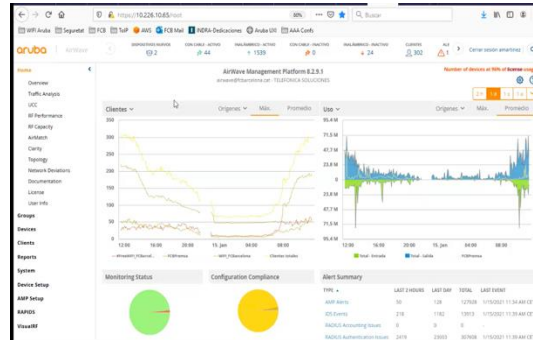


Irene Meta et al, The Camp Nou Stadium as a Testbed for City Physiology: A Modular Framework for Urban Digital Twins, Complexity, vol. 2021, Article ID 9731180, 2021. <https://doi.org/10.1155/2021/9731180>

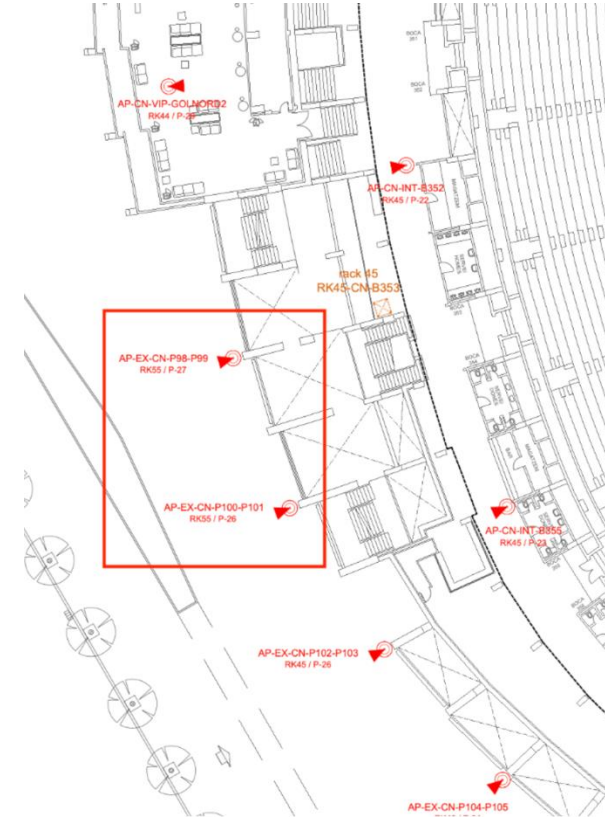
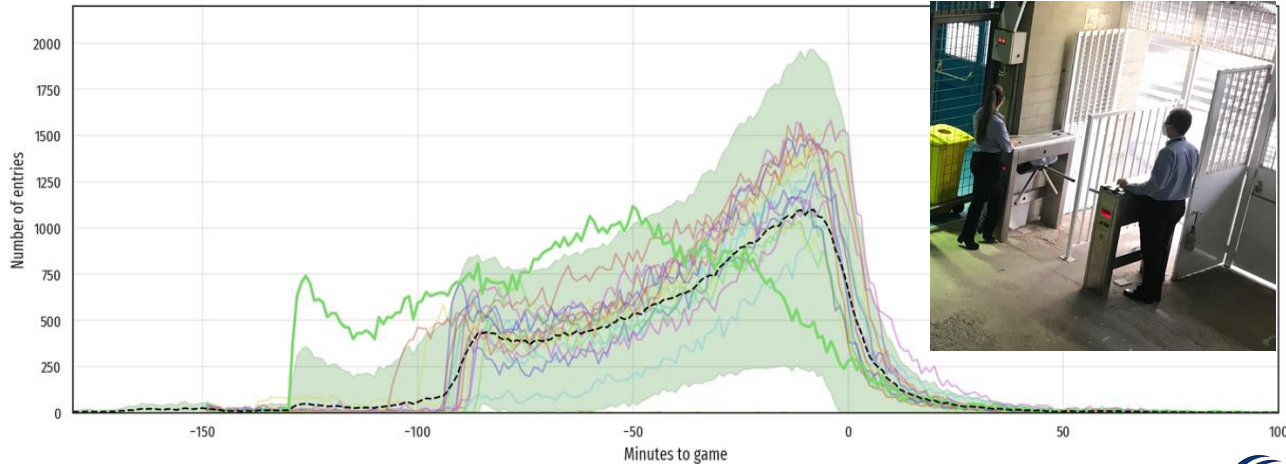
Sensors and IoT devices

API

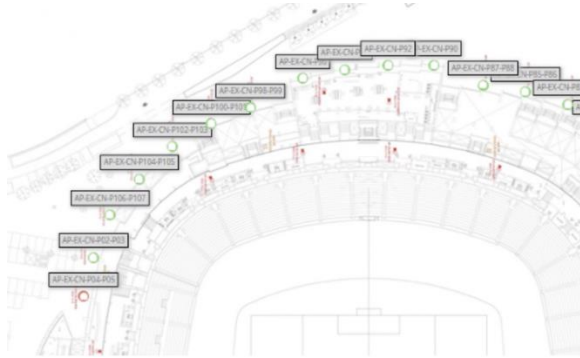
- Coming from FCB edge
- Anonymised WiFi APs data
- Sensors (turnstiles etc.)
- Cameras (delayed)



2019-2020 curves of attendance



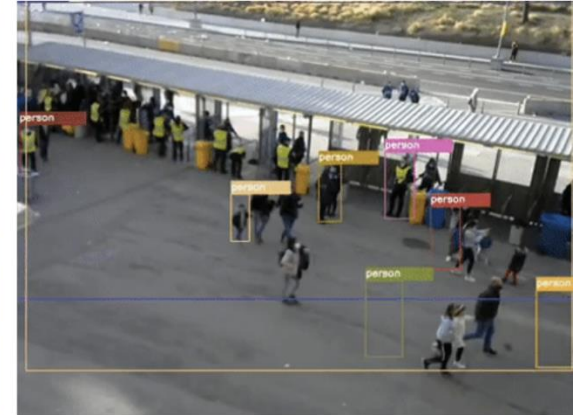
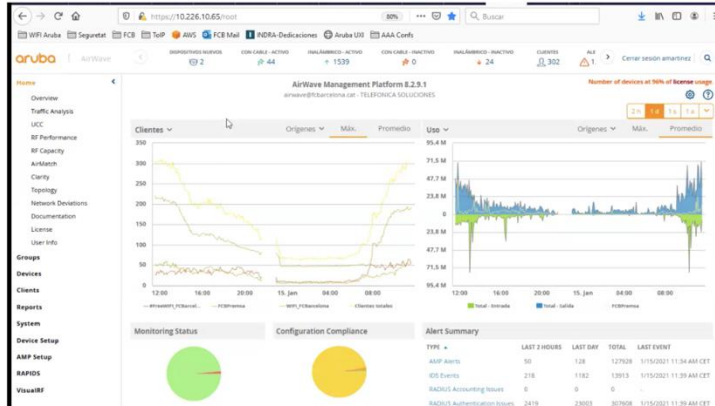
Data sources



Wifi APs
Turnstiles
Cameras
Ticketing
Vending
smart IoT

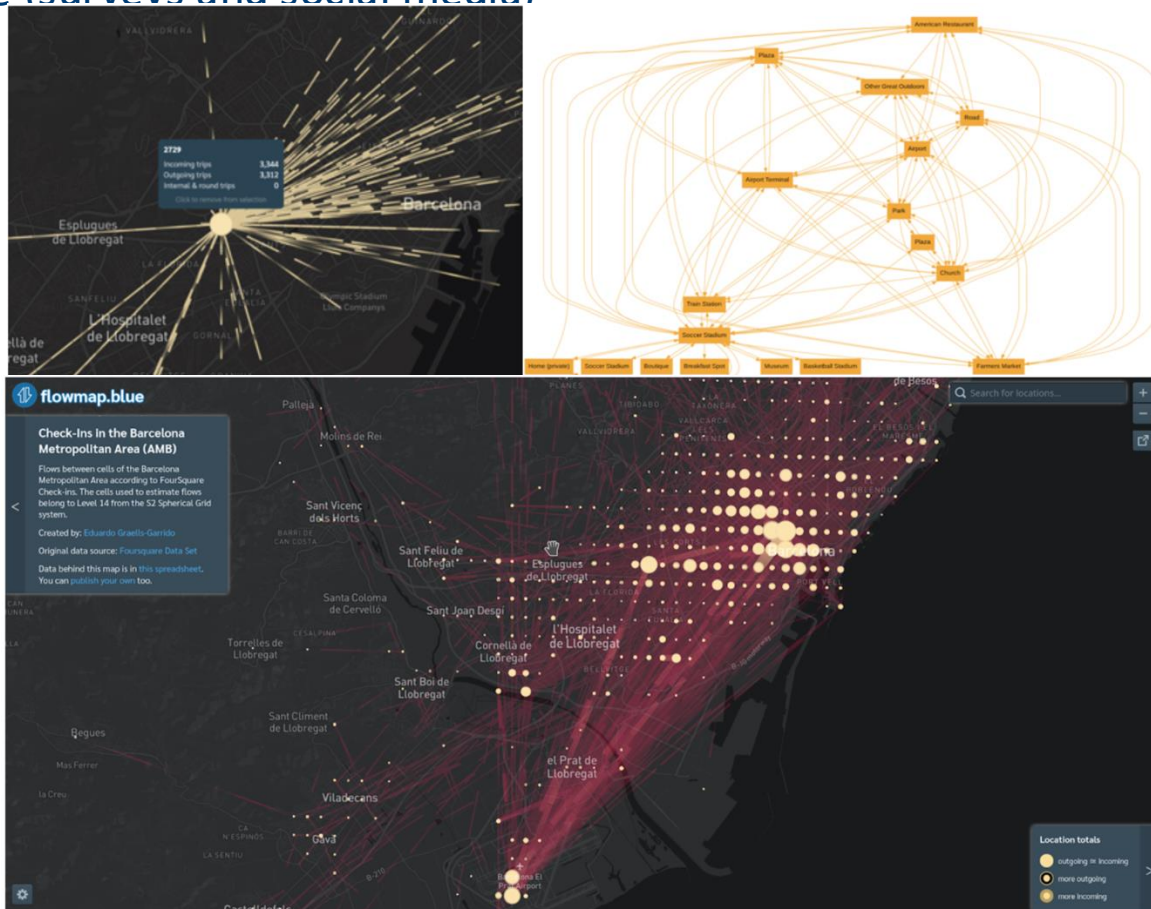
4G/5G
Weather
Traffic
Social media
Wikipedia

Kiosks
smart cameras
Signaling



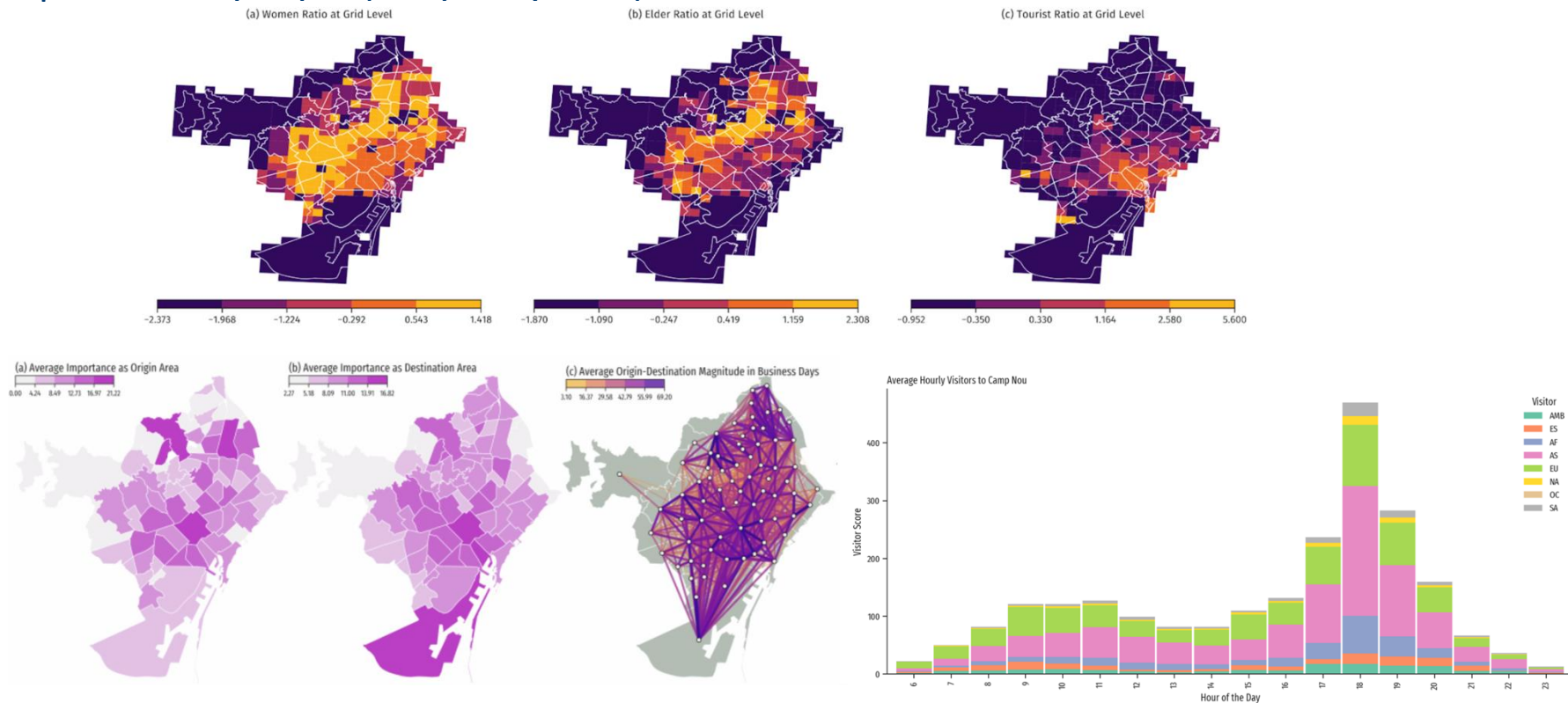
Data profiling

Source of people (surveys and social media)



Data profiling

Composition of people (telephony data)

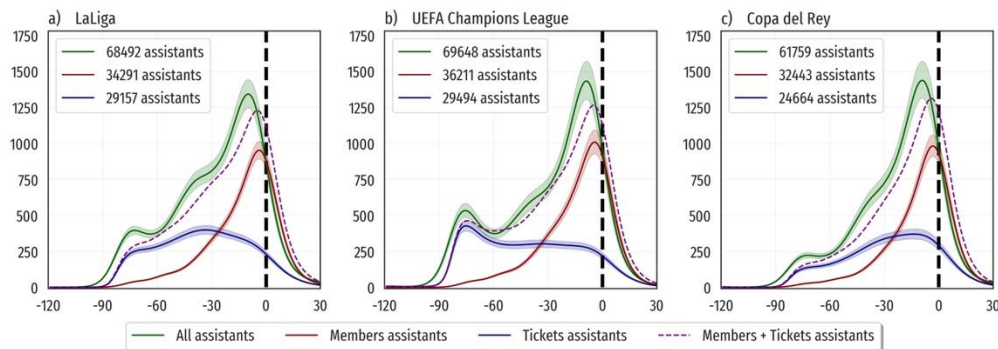
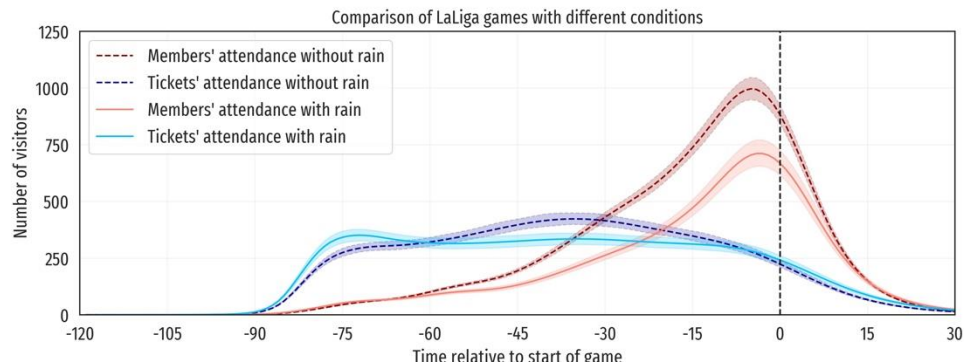
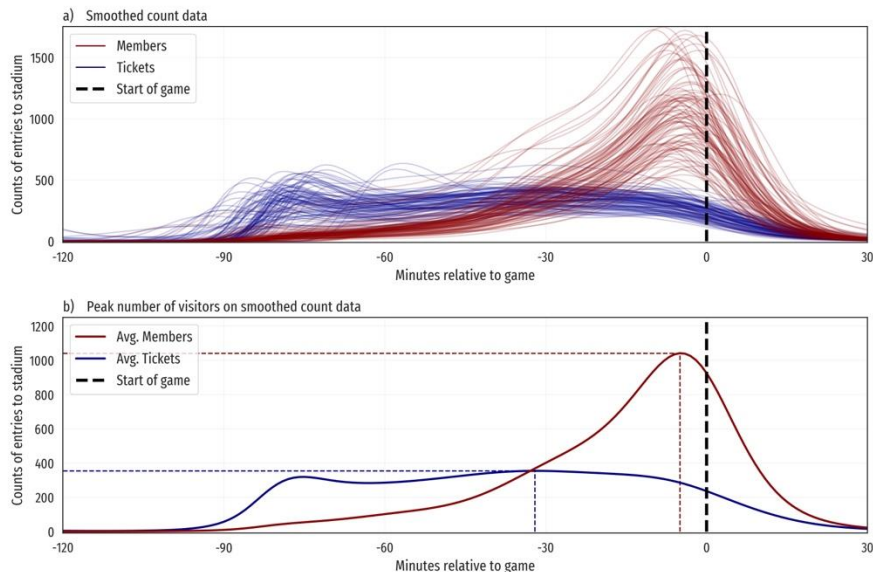


ML models: Predicting attendance

Attendance influx

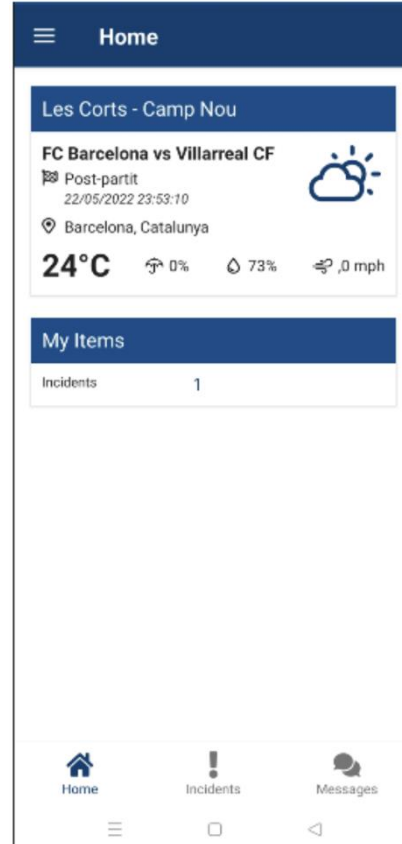
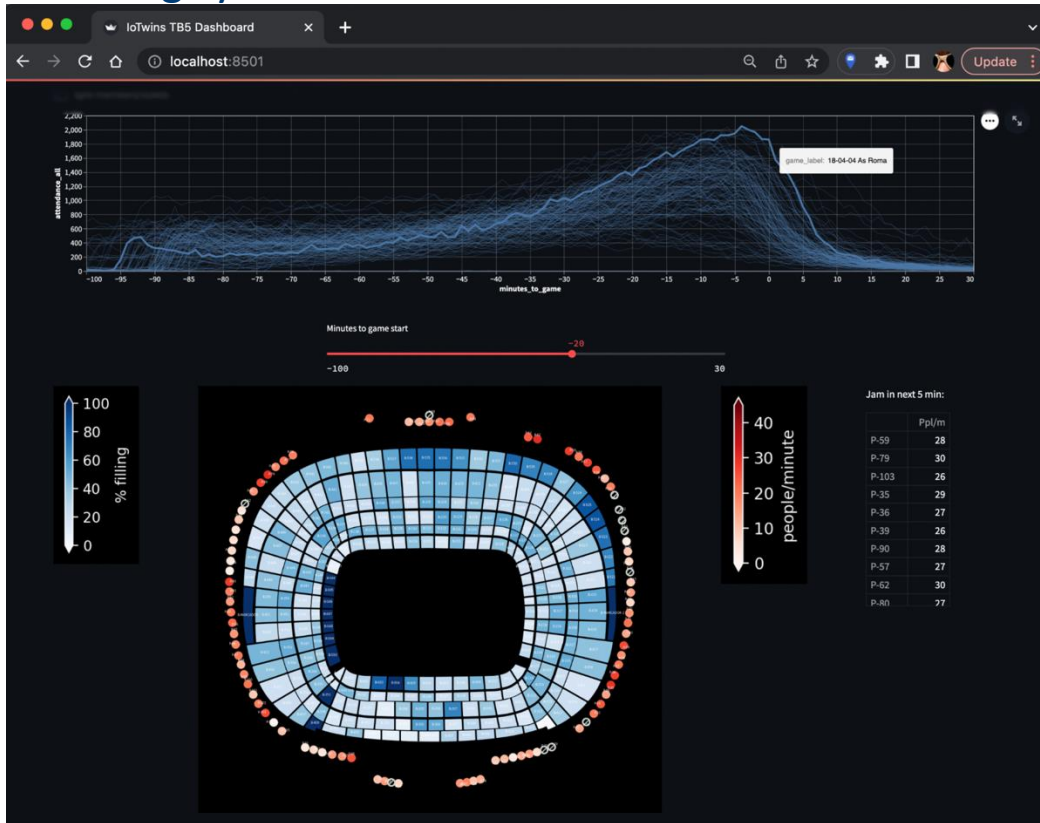
By gate and by minute

Including profile

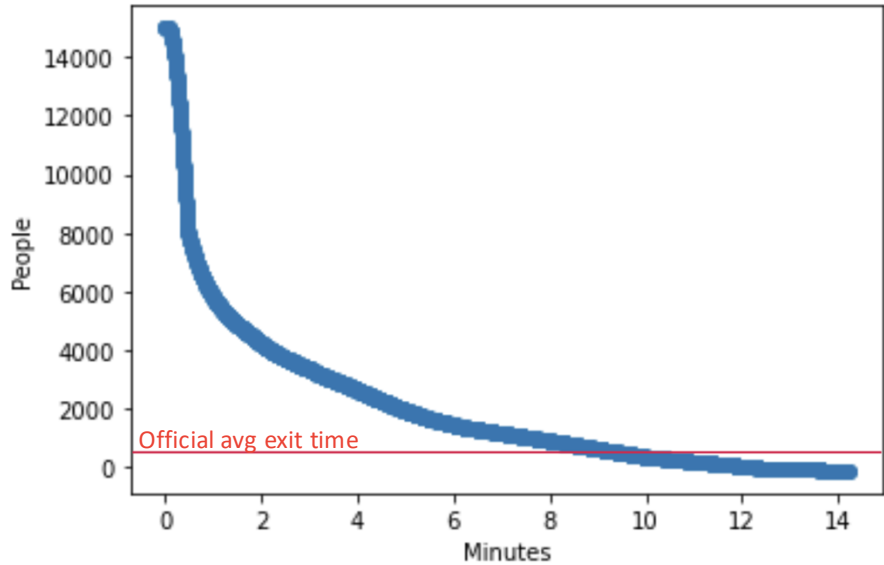


Prediction dashboard

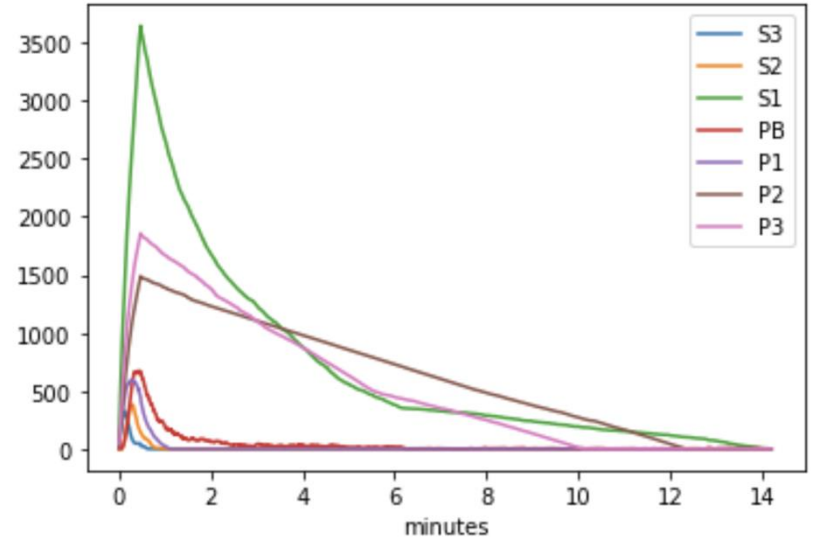
And alerting system



Evacuation simulation



Gol Nord exit flow



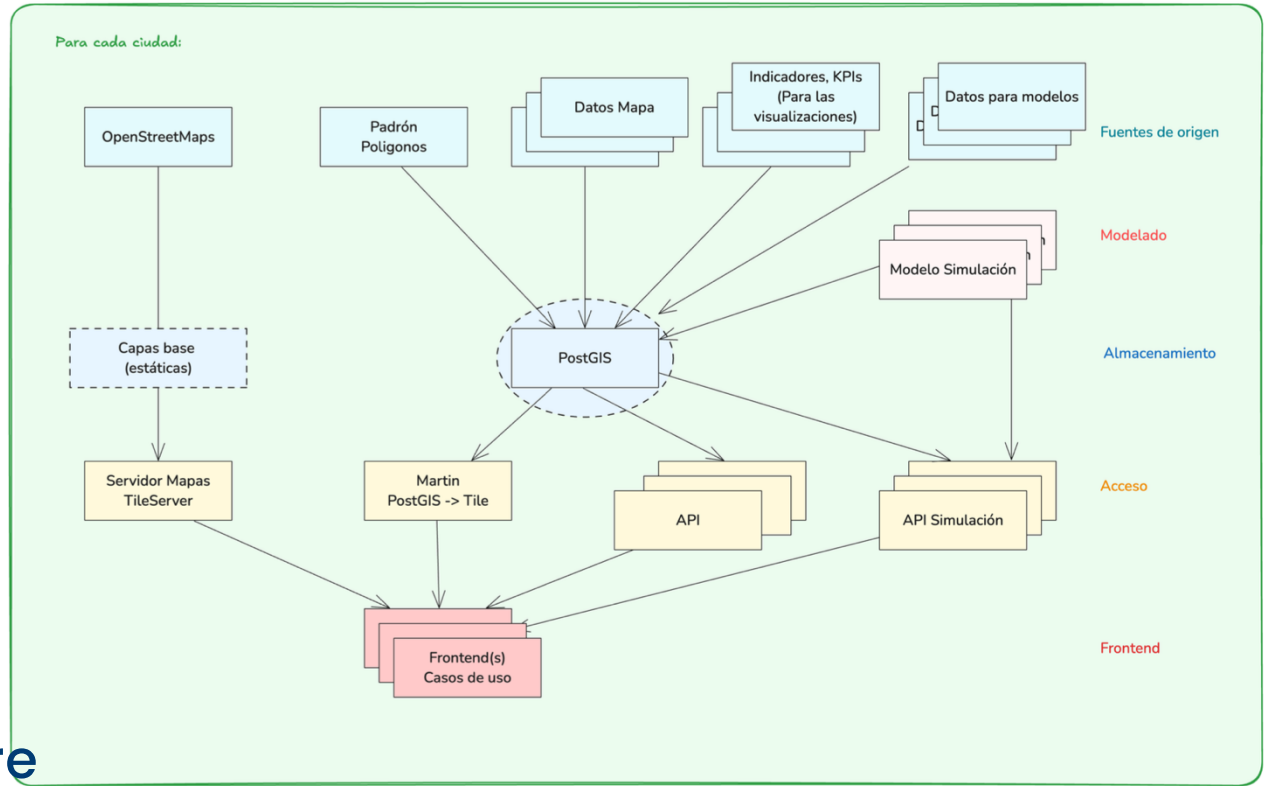
Exit flow by floor

Halfway conclusions

- Coupling of models/data can give more power than single, complex models
 - Different, slightly overlapping sources
 - Privacy by design
 - But, joining, fusing data is hard
 - Ontologies help in the long run
- Do you really need real time?
 - Urgent response, yes. Planning, not so much
 - Easier/cheaper to buy historical data
- How much detail do you really need
 - Anonymisation destroys it anyway

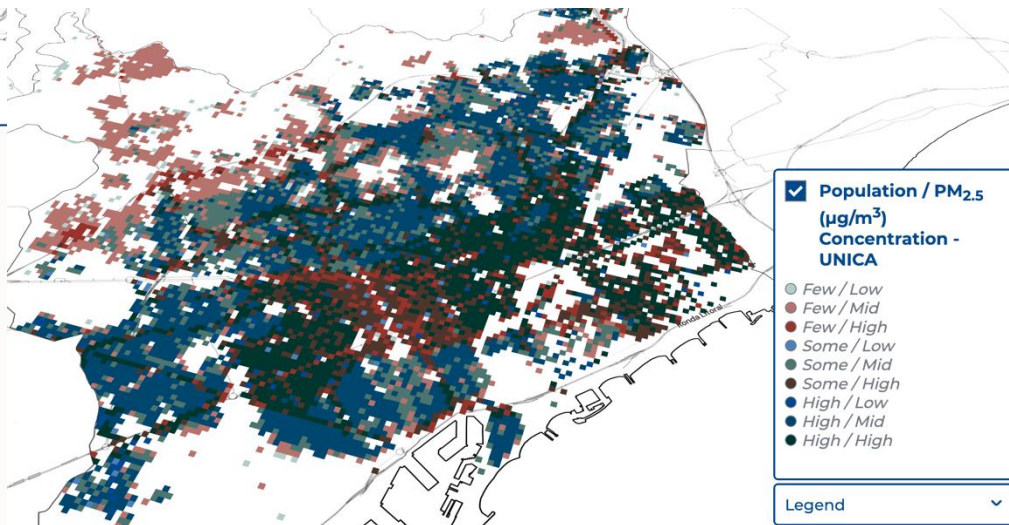
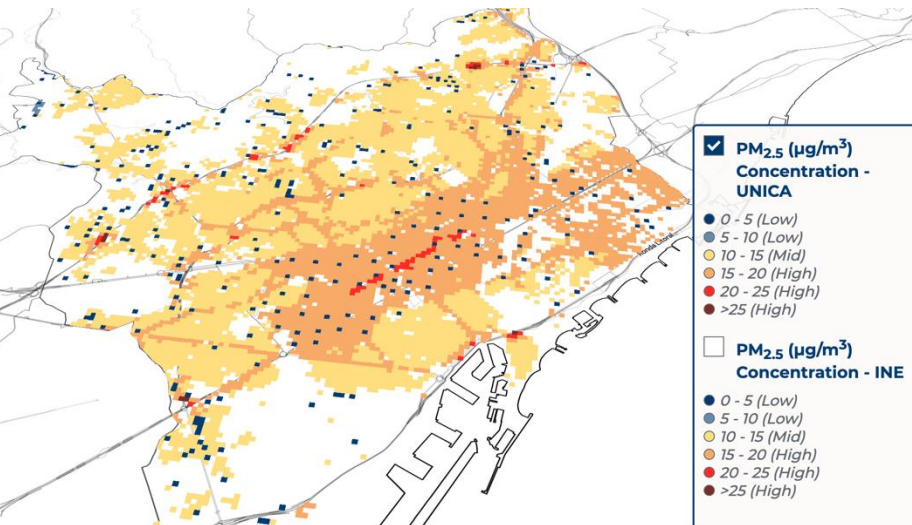
More use cases

Use case architecture



<https://air-quality-vmaps-c240ae.gitlab.io/>

Metrics to optimize are key



<https://air-quality-vmaps-c240ae.gitlab.io/>

Metrics to optimize are key

Models fit $1+1=3$



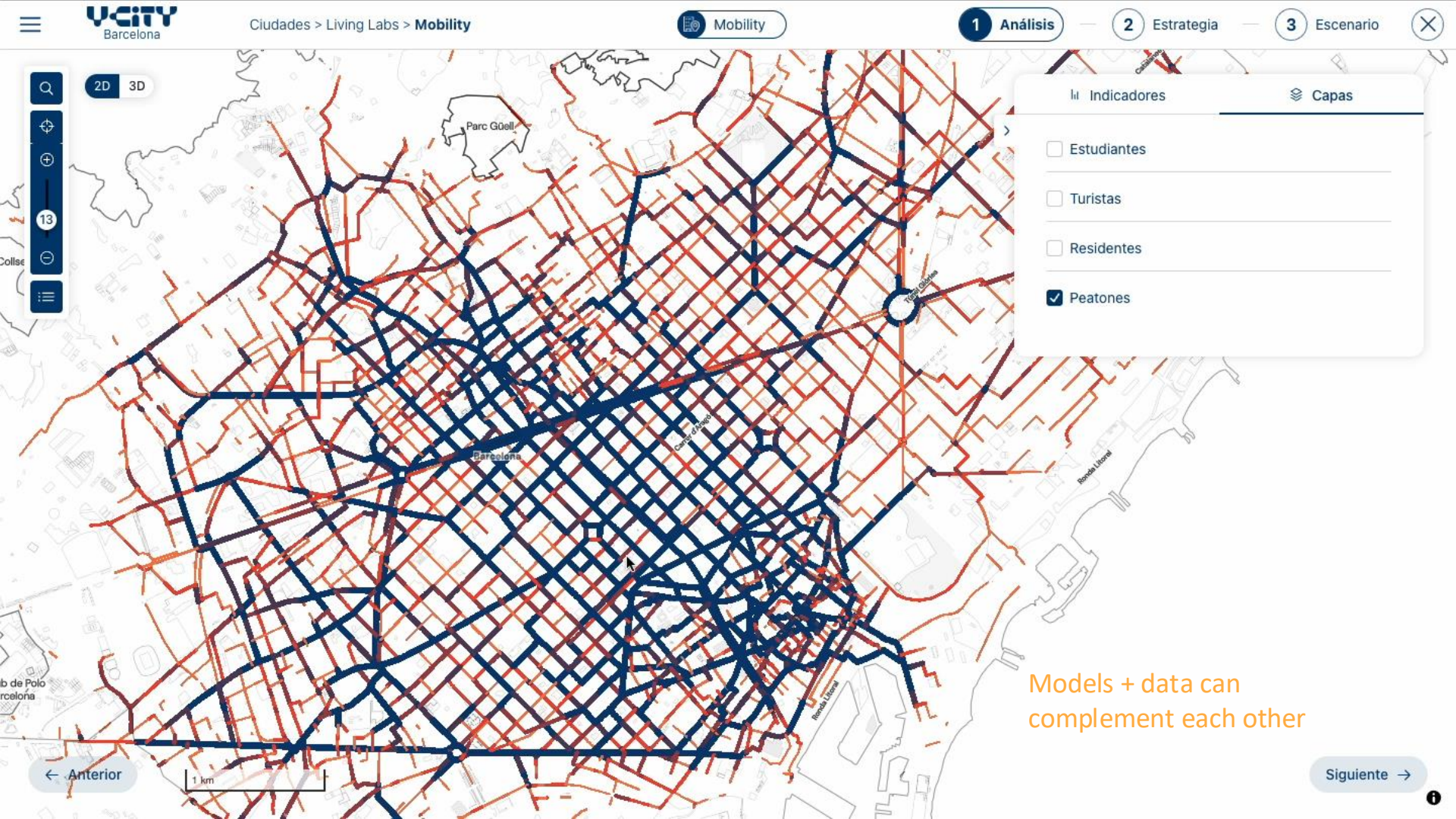


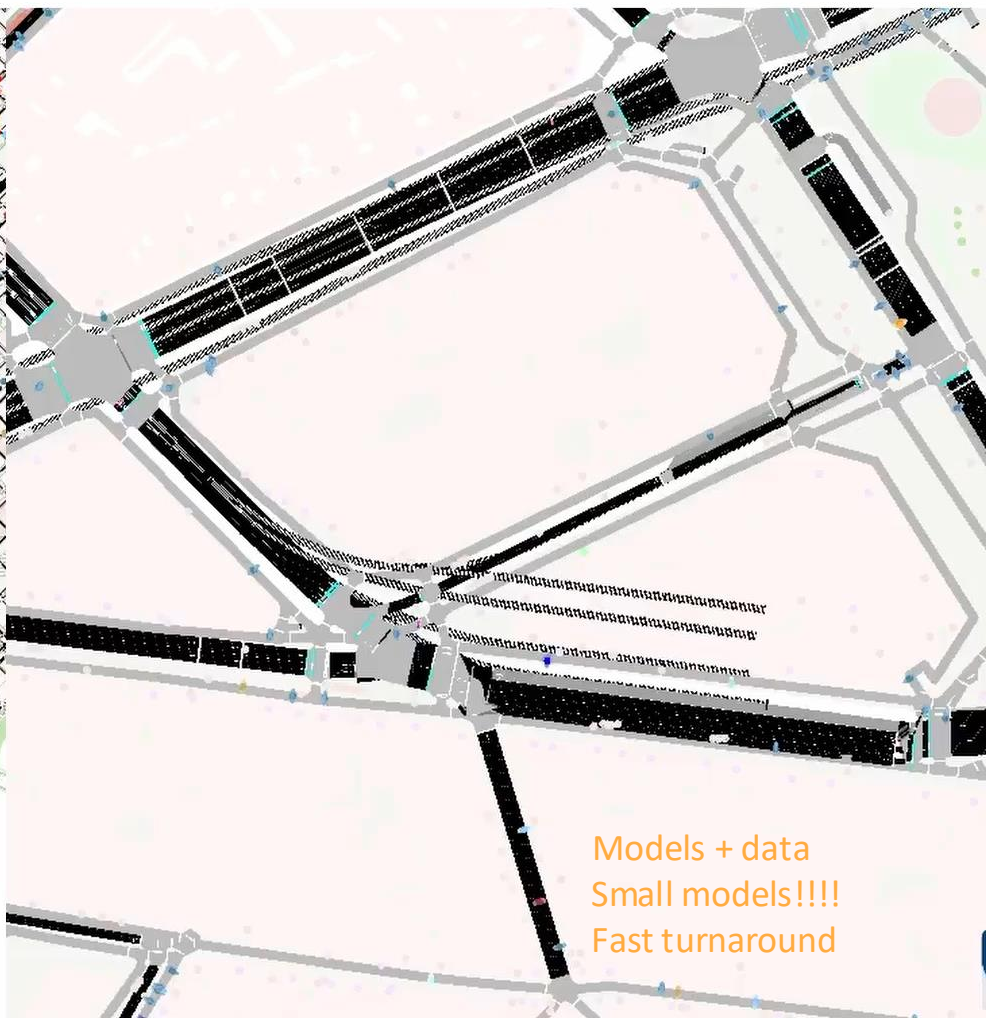
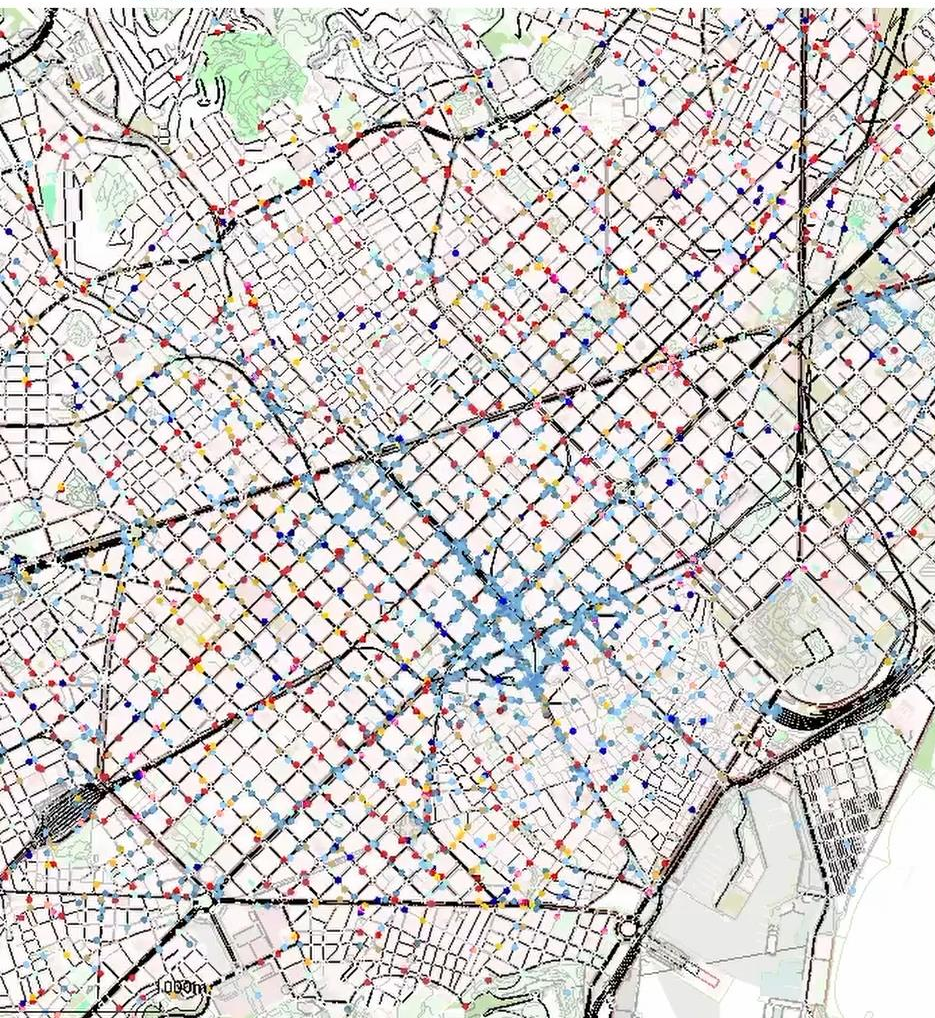
Proximidad

Este estudio visualiza a través del prisma de la proximidad el grado de accesibilidad a puntos de interés en 140 ciudades españolas de más de 50.000 habitantes. Será la base para el desarrollo del caso de uso de Proximidad, como una herramienta con la que las y los responsables de las políticas urbanas podrán determinar fácilmente la disposición a los servicios públicos vitales para la ciudadanía.

Stakeholders need
to define metrics

Compute resources
help cache data





Models + data
Small models!!!!
Fast turnaround

Collected conclusions

- Small models, perhaps not hyper precise, might be a better bet, specially to start
 - E.g. Openstreetmaps vs hand made maps for traffic simulators
- Coupling of models/data can give more power than single, complex models
 - Maybe focus on coverage, not depth
 - Eg: Air quality + demographics + traffic
 - Privacy by design
- Metrics to optimize are key
 - Stakeholders need to define those
- Joining, fusing data is hard
 - Ontologies help in the long run
- Do you really need real time?
 - Urgent response, yes. Planning, not so much
 - Cheaper to buy historical data
- How much detail do you really need
 - Anonymisation destroys it anyway



**Barcelona
Supercomputing
Center**
Centro Nacional de Supercomputación



**Funded by
the European Union**
NextGenerationEU



**Plan de
Recuperación,
Transformación
y Resiliencia**

The UNICO-GDU-HPC project, part of the UNICO I+D Cloud programme, has the Ministry for Digital Transformation and of Civil Service and the EU-Next Generation EU as financing entities, within the framework of the PRTR and the MRR.