

# Workshop: Co-designing digital twins: insights from multi- stakeholder collaboration

...

November 6, 2025

Eglantina Dani

FACTUAL

# REALLOCATE



## key facts

1 May 2023 - 30 April 2027

Mission project & CIVITAS project

Coordinator: University College Dublin

Call: HORIZON-MISS-2022-CIT-01

37 partners

Budget: EUR 12,690,025

## About REALLOCATE

REALLOCATE transforms streets into inclusive, green, safe and future-proof urban spaces, where communities live and thrive.



The project enables researchers, mobility experts, urban planners and local citizens to collectively re-imagine our cities and redesign how we move from one place to another.

FACTUAL leads WP2  
“Safe & Sustainable  
Mobility Labs”  
alongside 10 cities and  
15 pilots (lead + twin).

# The Pilots

## Safe & Sustainable Mobility Labs

Cities are piloting two interventions, while Twin Cities are piloting one intervention.

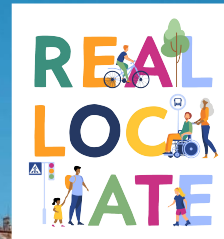
Piloting mobility solutions focusses on co-designing and co-developing technologies and interventions, promoting a modal shift towards more active travel.



## Twinning - Lead & Twin Cities

Each Lead City is twinned with a Twin City.

The cities closely follow each others' activities and collaborate to foster knowledge transfer.



# What we did with the cities

15 co-creation events + 15 stakeholder workshops to map gaps/needs and shape pilot actions

Co-creation and stakeholder workshops

Two complementary formats.

- Co-creation events (bigger, mixed audiences) to gather lived experience, map pain points/opportunities, and surface ideas.
- Stakeholder workshops (targeted, decision-oriented) to turn ideas into concrete actions, owners, and timelines.

Outputs: objectives, stakeholders, bottlenecks, strategic actions, roadmap.

What the templates contained:

- Stakeholder matrix and their needs
- Issues & objectives (specific challenge, expected outputs, primary users).
- Data & governance
- Proposing solutions
- Strategic actions / timeline /actors responsible



# Our co-creation method

## Context

Identify:

- **primary users** (departments/policy-makers),
- expected **outputs** (what the twin or process must produce),
- data/owners involved.

## Ideation

Capture **stakeholders** to involve, candidate datasets and access models, and potential co-creation moments with communities.

## Prioritisation

Select one path and note key **bottlenecks** (governance, funding, procurement, data, legal, internal alignment, partnerships) that must be removed.

## Action plan

Translate the approach into who does what, by when: governance set-up, data-sharing agreements, procurement steps, capacity building, and early pilots with timeline, milestones and owners.

# Stakeholders

1. Government and Regulatory Authorities: Departments within the municipality, Regulatory bodies, Policymakers
  2. Community and Residents: Community and neighbourhood associations, Parents' associations, Local Schools and Educational Institutions, Voluntary sector organisations & charities
  3. Businesses and Retailers: Local business owners, Chambers of commerce, Social enterprises
  4. Research institutions & Experts: Urban Planners, Safety experts, SUMP experts, Behavioural analysis experts
-

# Proof in practice

## Gothenburg

Peri-urban school mobility:

- broadened safety lens via resident dialogue; interactive mapping,
- Safe System approach, and “virtual mobility hub”.

Co-creation central to actions.

## Heidelberg

Regional commuter plan via inter-municipal cooperation (29 municipalities)

## Barcelona

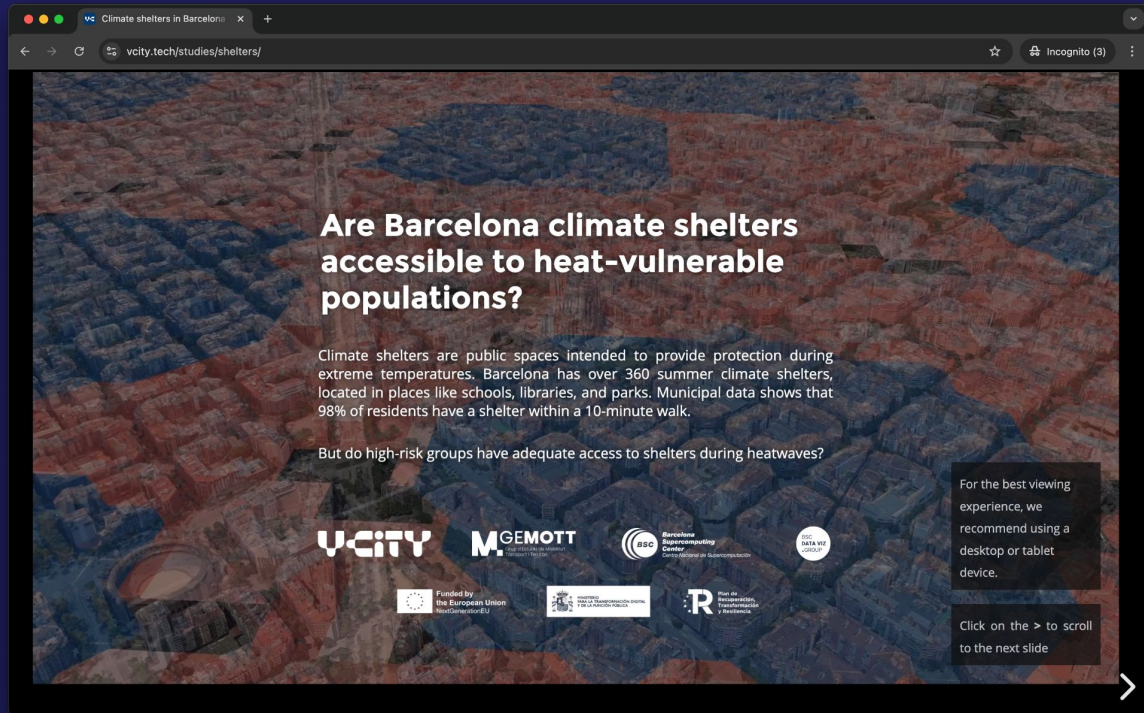
Shared-space conflicts: mixed methods + stakeholder matrix

## Lyon

School-area safety: multi-dept and education actors

**Today's topic: Climate shelters**





<https://www.vcity.tech/studies/shelters>

**Activity**

# Stakeholder groups

## Group A: Public Administrations

**City:** Climate/Resilience Office, Public Health, Social Services, Parks & Facilities, Education/Schools, Emergency Management

**Regional :** Health authority, Meteorological service

**Functions :** Data Office, Legal & DPO, Procurement, Accessibility Office

## Group B: Community and vulnerable users

Elderly associations, children/parent groups, migrant & low-income organisations, disability councils, neighbourhood associations, volunteer groups/NGOs (Red Cross/Civil Protection)

Local community supporters: libraries, school heads, social workers, community health workers, retirements homes, parks, gardens, civic centers, shopping centers

## Group C: Knowledge partners

Facility managers, mapping/data providers/technology partners, universities/researchers, health/heat experts, engagement partners, media outlets

# Workshop plan

11:45

12:00

12:15

12:30

12:45

13:00

## Kickoff / roles

Who are you (Group A/B/C) and which roles do you represent?  
What formal decisions can your group make today (approve/sign/operate)?

## Interaction map

What data do you need and from whom?  
Whose approval or coordination do you depend on?

## Decision matrix

Who is Decider / Consulted / Informed?  
What evidence triggers the decision (e.g., heat index, occupancy)?

## Data sharing

List the datasets you will use  
Who owns each dataset?

## Strategic actions

What risk could block each action? How will you mitigate it?  
What resources are needed?

## Present

## Final reflections

# Group template

Group	
Roles covered	
Decisional power	
Context and constraints	
Concerns about topic	
List of actions	
Data and transparency	
Support needed from other groups	

# Final reflections

What does it mean for your action plan?

How can it be integrated into you own case study?